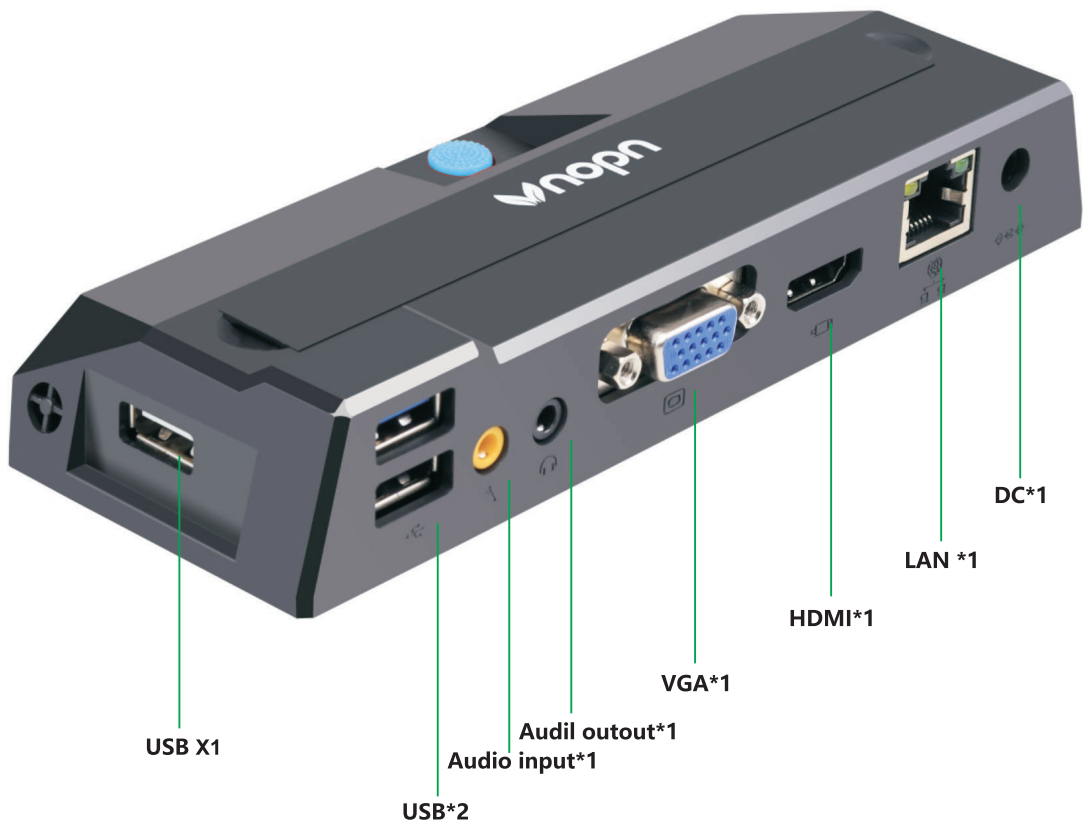


# R1 Pro

Make Desktop Computing Extremely Simple





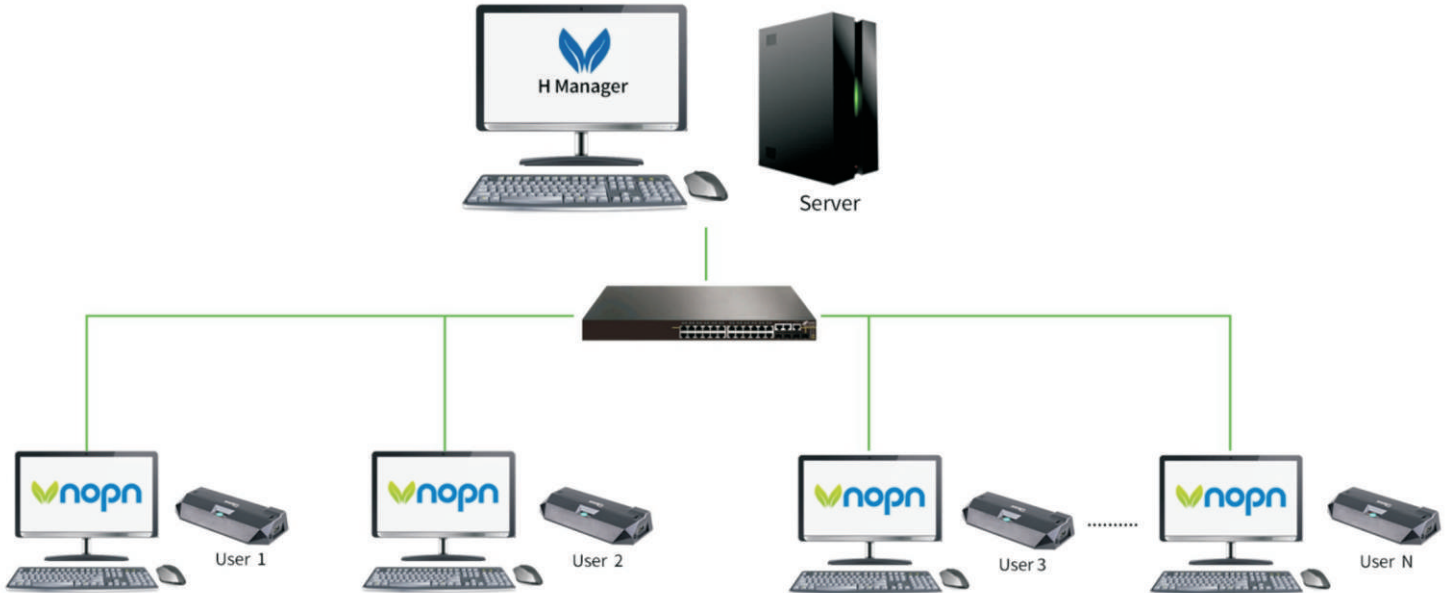
## Rplus Specification

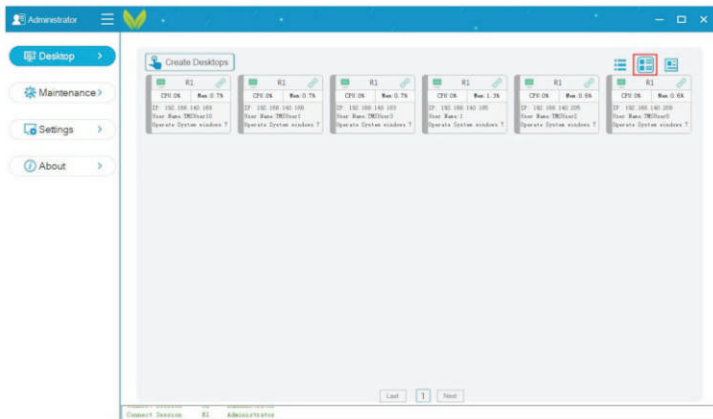
Framework	ARM-A9	
Processor	Quad-core Cortex 2.0Ghz	
RAM	DDR3 2G	
Flash	8GB	
Graphics Chips	Graphics Card Type MALI400 1080P	
OS	Embedded linux kernel	
Video	VGA resolution	800*600/1024*768/1366*768/1440*900/1280*1024
	HDMI resolution	1280*720/1920*1080 (MAX)
USB port	USB2.0 port (×3)	
Video	1080P HD	
Upgrade	Firmware Update	
Physical Dimensions (cm)	16.0*7.0*2.7cm	
Weight(G)	0.2KG-Machine 0.35KG with Packing	
Power supply	DC 5V/2.5A	
Energy consumption	Static Power less than 5W,Maximum Power less than 7.5W	
Video	Full Screen 1080P Video	
Protocol	HVDP/RDP 10/Remote FX	
External port	HD-MI, VGA,USB*3,RJ45,Power supply port,Switch port	
Working Temperature	-20°C ~ 50°C	
WIFI	Optional	

# Rplus Working Principle

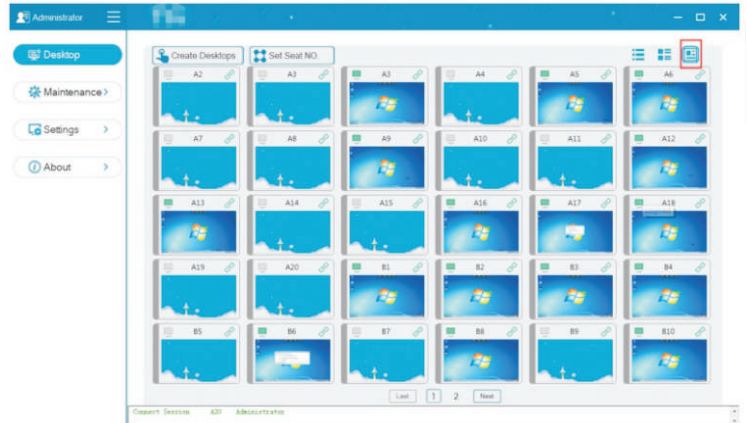
03

Support WIN 7/10 64bit  
Windows server 2012

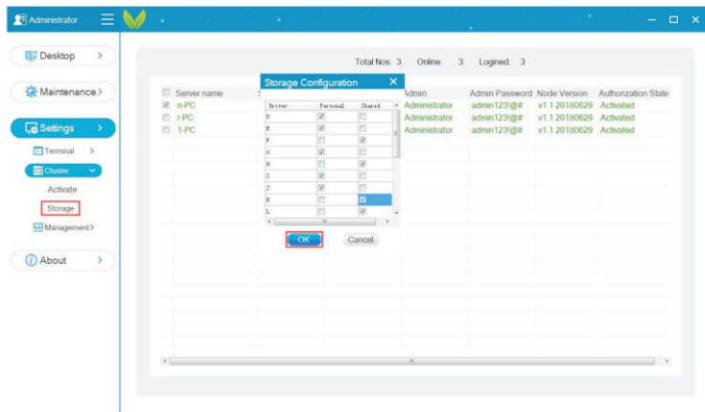




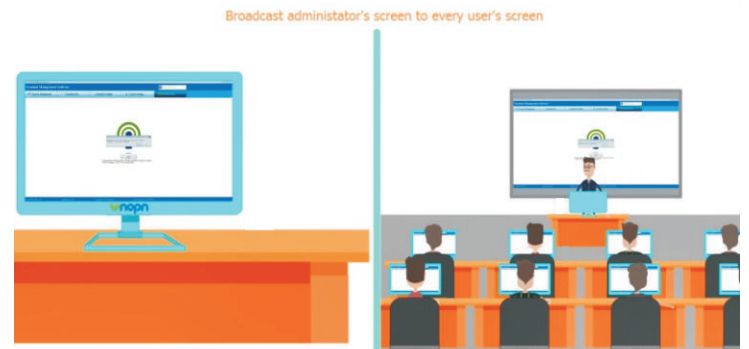
a. Bulk Create Users



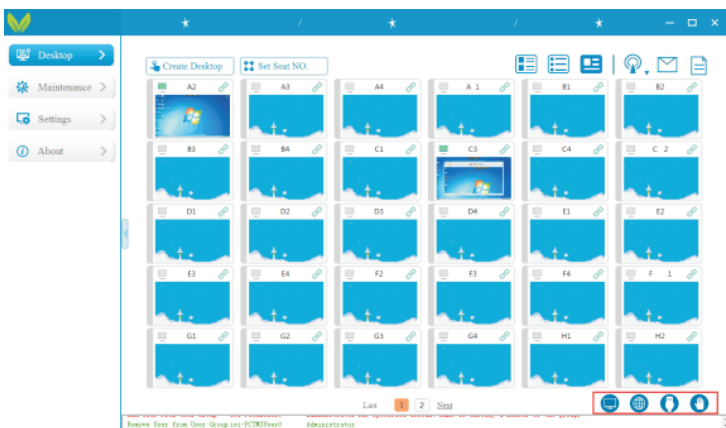
b. Monitor & Send Message



c. Set Private Disk



d. Broadcast



e. Terminal Black Screen/Disable Network & USB Peripheral/Hand up

Awesome Experience in  
Video Display, Ms Office, 3D Design..



Fully Support  
Various USB Peripherals





\*The power plug type is optional.