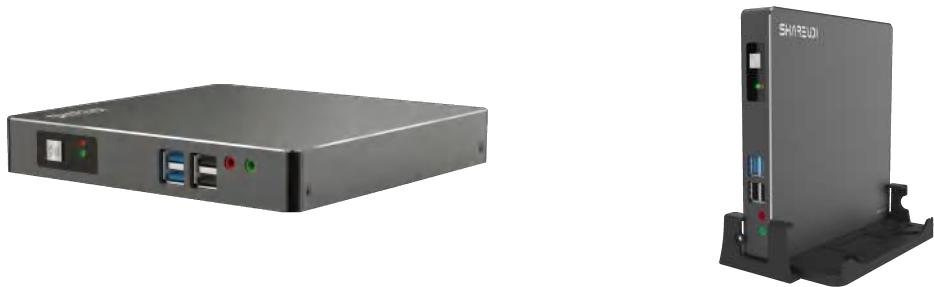


Specification	
Model	K3-7167u
CPU	Intel Core I3 7167U, Dual-core 4 threads 2.8ghz
RAM	1*SO-DDR3L SDRAM slot, maximum 16GB DDR3L SDRAM
SATA	1*MSATA,1*mini-PCI-E, support wifi, and Bluetooth
Network Card	1*RTL 8111E 1000M LAN, support wake on LAN
Audio Card	Realtek ALC662 Chipset
WIFI	150M WIFI optional, internal WIFI module, external antenna to strengthen signal
External Port	2*USB3.0,4*USB2.0,1*HDMI,1*VGA,1*MIC+SPK,1* RJ45 Lan, 1* RJ45 COM,1* PS/2,1*12V DC IN,1*Power Switch
Internal Port	1*SIM1,1*DC_IN2,1*FP1,1*CPU_FAN1,1*CLR1,1*PWRON1
Power Supply	DC IN 12V-5A
Principle of heat	Fan cooling
Chassis material	High-quality aluminum alloy
Size	175*175*30mm (W*D*H)
Weight	603g
Support OS	windows 7/8/10 & Linux OS

Product Show



Product Packing List

No.	Qty	Material List
1	1	Sharevdi MINI PC K3
2	1	12V/5A Power Adapter
3	1	Safety and Warranty Guide
4	1	Product Manual
5	1	Bracket (sets)
6	6	Screws